

ASSIST™

Premium Nonionic Compatibility Agent and Surfactant Blend

Research and field trials* have shown ASSIST™ is a highly effective, easy-to-use, multifunctional blend of nonionic compatibility agents and surfactants (NIS). This new, industry-leading product allows Garrco CONTROL™ to mix with RoundupMAX® versions of glyphosate without using ammonium sulfate (AMS), while also improving the uniformity and compatibility of complex tank mixtures. ASSIST enhances the hydration of polymers such as CONTROL, improving performance. And because ASSIST also provides water conditioning AND works as an NIS, it can be eliminated from the mix, although NIS may increase efficacy.

Features & Benefits of ASSIST™

- **PROVIDES** both surfactant and compatibility agents in a single product
- **CONCENTRATED** and very cost-effective
- **ELIMINATES** the need to add surfactants under most conditions when applied at 1 qt/acre
- **UNIQUE BLEND** enhances the performance of a wide range of complex fertilizer and agrochemical products without need of a water conditioner (see picture)
- **ALLOWS** the use of CONTROL with Roundup PowerMAX and WeatherMAX without the need to add AMS. ASSIST provides additional surfactants, water conditioning and better CONTROL performance for those hard-to-mix tank mixtures.
- **PERFORMS WELL** with herbicides at 1 qt/100 gal, but higher rates may provide added benefit on tough weeds in adverse environmental conditions
- **ALWAYS** follow the label directions of the pesticide to determine correct rates of NIS and proper mixing order



*For research and additional information, contact:

www.garrco.com Phone: 765-395-3441 Fax: 413-235-5154 mrfoam@garrco.com
GarrCo Products, Inc. P.O. Box 619 Converse, IN 46919-0619

Take CONTROL of Your Spray Pattern With These Additional GarrCo Premium Adjuvants

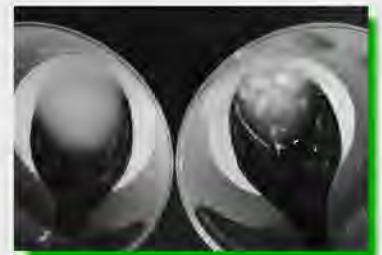
PREVENT™ is a premium concentrated silicone antifoam/defoamer designed to provide efficient, economical foam control.

REMOVE™ is a concentrated, powerful cleaning formulation that very effectively removes the tough-to-clean tank residues that often occur when pesticides, adjuvants and fertilizers are mixed together in different water qualities. When properly used **REMOVE** completely cleans chemical residues out of the spray tanks, lines, nozzles and all internal tank parts. Additionally, the longer the residues remain in the tank the further they can 'dehydrate' creating an even harder-to-clean situation. In this situation the **REMOVE** solution should be allowed to remain on the residue for a longer time period.

CONTROL™ is a high quality, unique, concentrated polymer blend. Extensive research and commercial experience shows it enhances the performance of all pesticide types by improving deposition and mitigating drift. **CONTROL** increases droplet size, lowers the rate of evaporation and reduces spray droplet bounce off the target plant, thus increasing retention of pesticide on the plant. **CONTROL** is compatible with almost all pesticides, but real AMS or **ASSIST™** must be used with Roundup MAX® versions of glyphosate.



CONTROL (left) mixes more rapidly into a uniform dispersion than competitive product (right). **CONTROL** will not gum up filters or clog nozzles.



CONTROL WM™ is a highly effective and easy-to-use deposition aid and drift mitigation adjuvant that features all the performance of **CONTROL** and is compatible with all pesticides, including RoundUp WeatherMAX®, OriginalMAX® and PowerMAX®, with or without AMS. Even though AMS is not required, its addition will often help efficacy.

Your Solution To Better Pesticide Efficacy